

WM100

Vibration digital sensor

The WM100 vibration sensor provides displacement, speed and acceleration values and their spectral analysis for equipment online protection and condition monitoring.

Typical applications

| | |
|---------------|-------------------|
| Pumps | Crushers |
| Coolers | Mixers |
| Fans | General equipment |
| Wind turbines | |
| Compressors | |
| Gearboxes | |

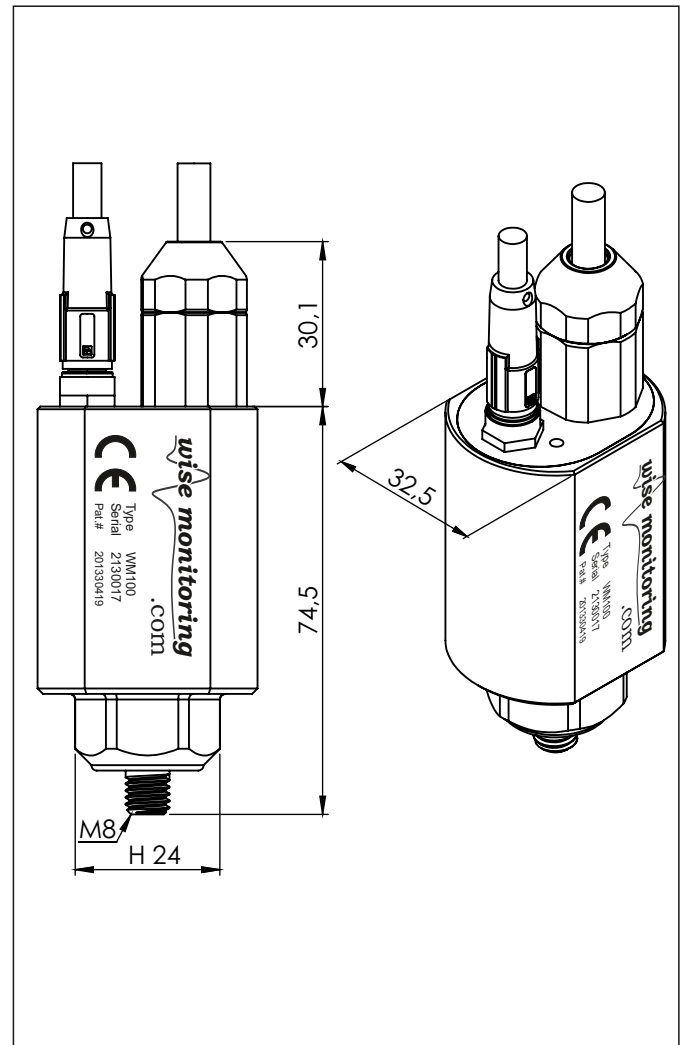
Technical data

Vibration

| | |
|-----------------|-------------|
| Measuring range | ±20 g |
| Precision | 0.001 g |
| Frequency range | 0.5-1600 Hz |

| | |
|-----------------------|------------------------|
| Power supply | POE |
| Communication | Ethernet MODBUS TCP |
| Connector | RJ45 |
| Material | AISI 304 |
| Operation temperature | -40° a 85°C |
| Sealing | IP 65 |
| Weight | 240 g |

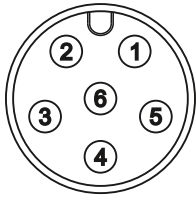
Dimensions



WM100 vibration sensor is a patented device under patent number 201330419

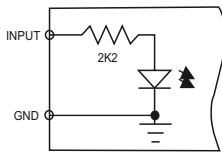
The sensor includes ADC module, DSP microprocessor and memory to analyze the signal at the measuring point and manage an interface web server for user access to information and configurable alarms.

Connector pinout Digital Input / Output

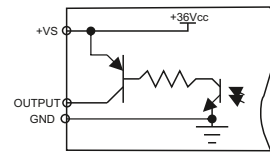


| | |
|-------|-------|
| In1 | BROWN |
| In2 | WHITE |
| +Vext | BLUE |
| Out1 | BLACK |
| Out2 | GREY |
| 0v | PINK |

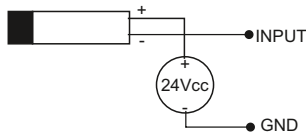
Internal isolated input circuit



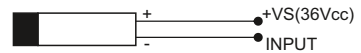
Internal isolated output circuit



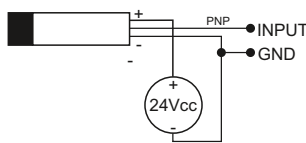
External powered two-wire inductive sensor



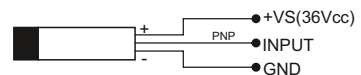
Internal powered two-wire inductive sensor



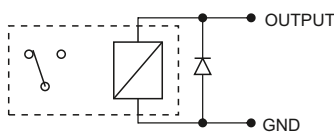
External powered three-wire pnp sensor



Internal powered three-wire pnp sensor



Internal powered 36VDC external relay coil



External powered 24VDC external relay coil

