

WM300T

Triaxial vibration and temperature digital sensor

The WM300T vibration and temperature sensor measures temperature and three axis vibration, providing displacement, speed and acceleration values and their spectral analysis for equipment online protection and condition monitoring.

Typical applications

Pumps	Crushers
Coolers	Mixers
Fans	General equipment
Wind turbines	
Compressors	
Gearboxes	

Technical data

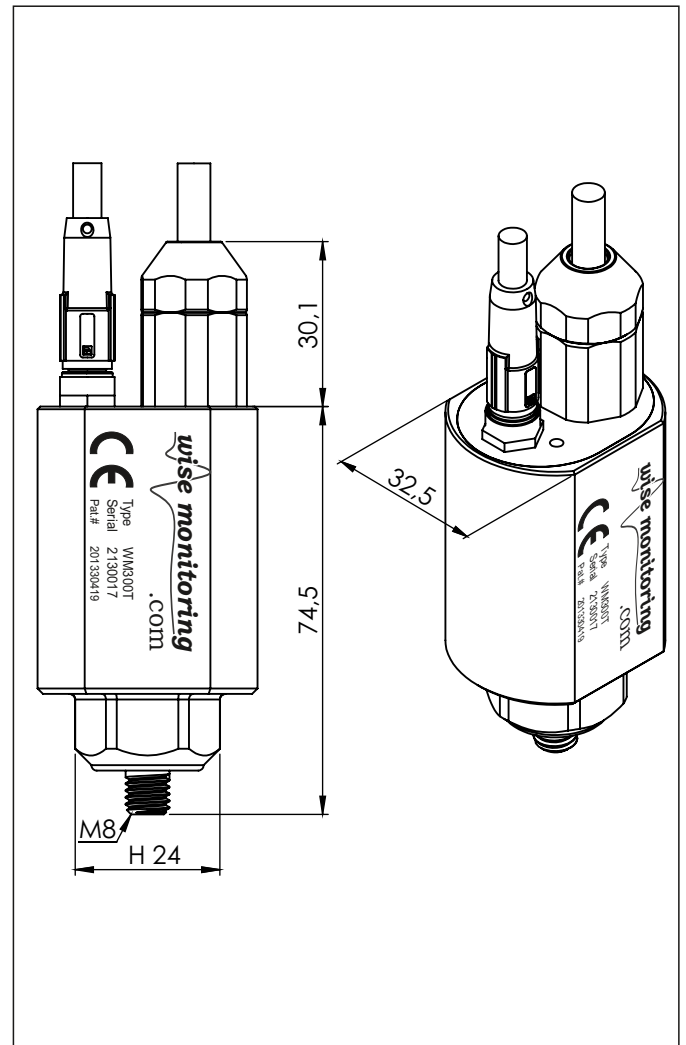
Vibration

Measuring range	±20 g
Precision	0.001 g
Frequency range	
X axis	0.5-1600 Hz
Y axis	0.5-550 Hz
Z axis	0.5-1600 Hz

Temperature

Measuring range	0-125°C
Power supply	POE
Communication	Ethernet MODBUS TCP
Connector	RJ45
Material	AISI 304
Operation temperature	-40° a 85°C
Sealing	IP 65
Weight	240 g

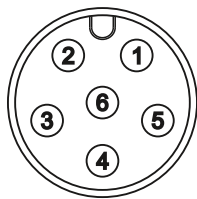
Dimensions



WM300T vibration and temperature sensor is a patented device under patent number 201330419

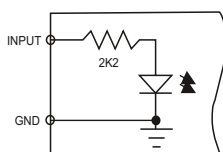
The sensor includes ADC module, DSP microprocessor and memory to analyze the signal at the measuring point and manage an interface web server for user access to information and configurable alarms.

Connector pinout Digital Input / Output

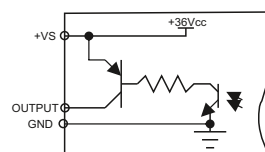


In1	BROWN
In2	WHITE
+Vext	BLUE
Out1	BLACK
Out2	GREY
0v	PINK

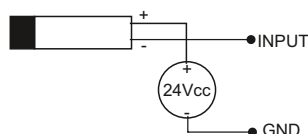
Internal isolated input circuit



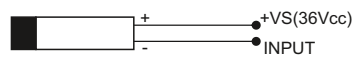
Internal isolated output circuit



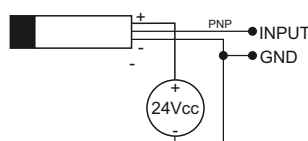
External powered two-wire inductive sensor



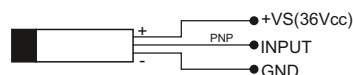
Internal powered two-wire inductive sensor



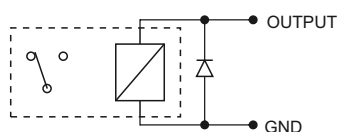
External powered three-wire pnp sensor



Internal powered three-wire pnp sensor



Internal powered 36VDC external relay coil



External powered 24VDC external relay coil

